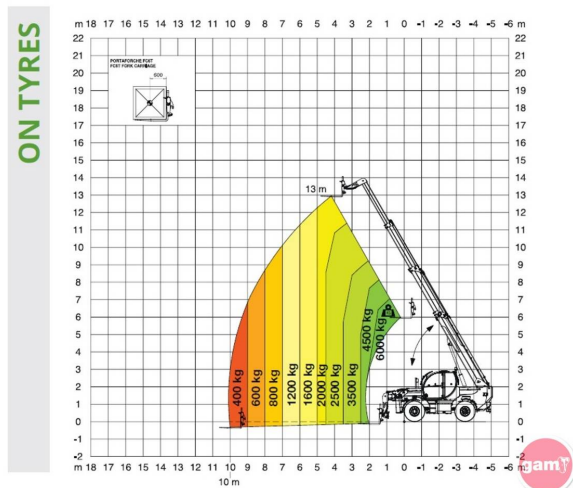




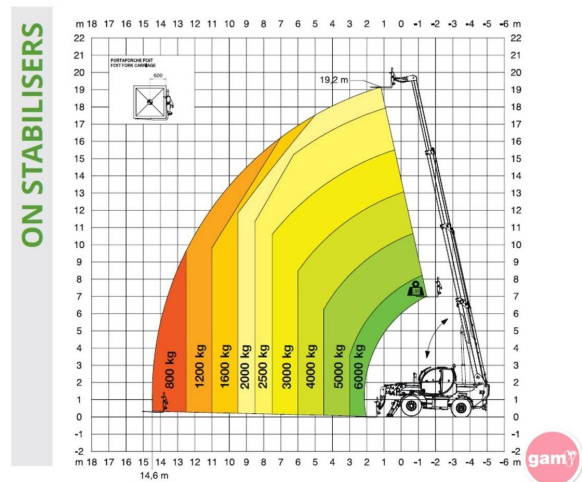
TH 6.20 front telescopic handler

Referencia: TH 6.20

LOAD CHART ON TYRES



LOAD CHART ON STABILISERS



Description

It has four drive wheels, which together with the hydrostatic transmission system guarantee safety in handling work. The load position can also be changed on the TH 6.20 without moving the vehicle, thanks to its lateral shift system.

It includes a 134 hp Deutz 3.6 L4 TCD motor and a 100% pressurised cabin that facilitates the operator's vision, as well as an easy-to-use multifunction screen. The accessories, interchangeable

throughout the range, are detected through the RFID system that creates the corresponding load diagrams. This model is compliant with the EN13000 standard for working with suspended loads.

The HTH 6.20 handlers includes

- Registered design cabin
- FOPS/ROPS certification
- MCTS system: Touch screen with diagnostics
- 100% air filtration
- Standard heating and air conditioning
- Cup holder
- RFID accessory recognition system
- Four wheel drive
- Automatic levelling
- Electrical system in CAN Bus

Technical sheet

| | |
|--------------------------------------|------------------------------|
| Model | TH 6.20 |
| Engine type | Deutz TCD 3,6 L4 Stage V |
| Length | 6520 mm |
| Width | 2550 mm |
| Weight | 14400 kg |
| Load capacity | 6000 kg |
| Height Elevation | 20 m |
| Maximum range | 5.7 m |
| Motor Power (KW) | 100 kW (136 hp) at 2,200 rpm |
| Maximum elevation height | 9.699999999999999 m |
| Stabilizers | Pivoting |
| Load capacity at maximum height | 2000 kg |
| Ground clearance | 420 mm |
| No. of gears | 44959 |
| Hydraulic system | 350 bar (Load Sensing) |
| Travel speed | 40 km/h |
| Climate control as standard | Yes |
| Automatic recognition of accessories | Yes |
| Ordering | 6000 |