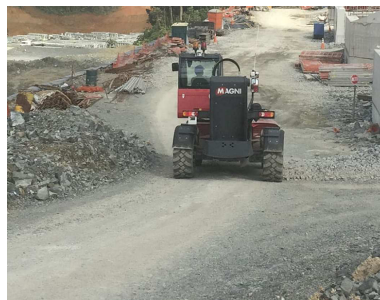




HTH 10.10 front telescopic handler

Referencia: HTH 10.10



Description

It has four drive wheels, three types of steering and ample ground clearance, ensuring great manoeuvrability on any type of terrain.

It includes a 136 hp Deutz 3.6 L4 TCD motor and a 100% pressurised cabin that facilitates the operator's vision, as well as an easy-to-use multifunction screen. It has automatic accessory detection through the RFID system, which creates the corresponding load diagrams. The accessories are interchangeable throughout the range.

The HTH 10.10 fixed handler's equipment includes

- Registered design cabin
- FOPS/ROPS certification
- MCTS system: Touch screen with diagnostics
- 100% air filtration.

- Standard heating and air conditioning
- Cup holder
- RFID accessory recognition system
- Four wheel drive
- Automatic levelling
- Electrical system in CAN Bus
- Optimal lifting performance
- Gradeability 34°/58°

Technical sheet

Model	HTH 10.10
Engine type	Deutz TCD 3.6 L4 - stage V
Brand	MAGNI
Length	5660 mm
Width	2550 mm
Weight	13900 kg
Load capacity	10000 kg
Height Elevation	10 m
Maximum range	5.05 m
Motor Power (KW)	100 kW (134 hp) @ 2,200 rpm
Load capacity at maximum height	7000 kg
Ground clearance	370 mm
No. of gears	44959
Hydraulic system	350 bar (Load Sensing)
Travel speed	40 km/h
Climate control as standard	Yes
Automatic recognition of accessories	Yes
Ordering	10000