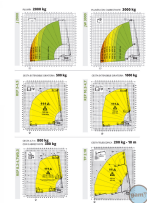
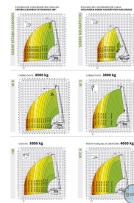
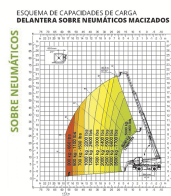
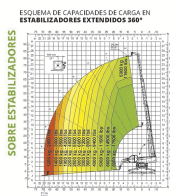




RTH 8.25 rotating telescopic handler

Referencia: RTH 8.25



Description

It has scissor stabilisers, making it ideal for working in confined spaces where the machine is programmed to ensure the best load diagram on each of its sides, even partially stabilised. With the stabilisers fully extended, the machine offers maximum performance in continuous 360° rotation.

The RTH 8.25 SH model offers the possibility of working with the same accessory in two different modes: strength mode M2 and stability mode M1. The first mode can handle very heavy loads, with a limited range. The second prioritises range over load.

Includes a Mercedes OM 934 LA Phase IV 203CV motor. It has 360° rotation. With a 100% pressurised cabin that facilitates the operator's vision, it includes an easy-to-use multifunction screen. It has automatic accessory detection through the RFID system, which creates the corresponding load diagrams. The accessories are interchangeable throughout the range.

The RTH 8.25 SH handlers includes

- 360° rotation

- 3-in-1 Handler that can adapt as a crane, forklift and basket
- Registered design cabin
- FOPS/ROPS certification
- MCTS system: Touch screen with diagnostics
- 100% air filtration.
- Standard heating and air conditioning
- Cup holder
- RFID accessory recognition system
- Four wheel drive
- Automatic levelling
- Electrical system in CAN Bus
- Optimal lifting performance
- Gradeability 30°/40°

Technical sheet

Model	RTH 8.25
Engine type	Volvo TAD 583 VE - Stage V
Brand	MAGNI
Length	7950 mm
Width	2540 mm
Weight	24000 kg
Load capacity	8000 kg
Height Elevation	25 m
Maximum range	21.1 m
Motor Power (KW)	175 kW (238 hp) at 2,300 rpm
Stabilizers	in Scissors
Load capacity at maximum height	5300 kg
Ground clearance	300 mm
No. of gears	44959
Hydraulic system	350 bar
Travel speed	25 km/h
Rotation	360° (continued)
Climate control as standard	Yes
Automatic recognition of accessories	Yes
Ordering	8000