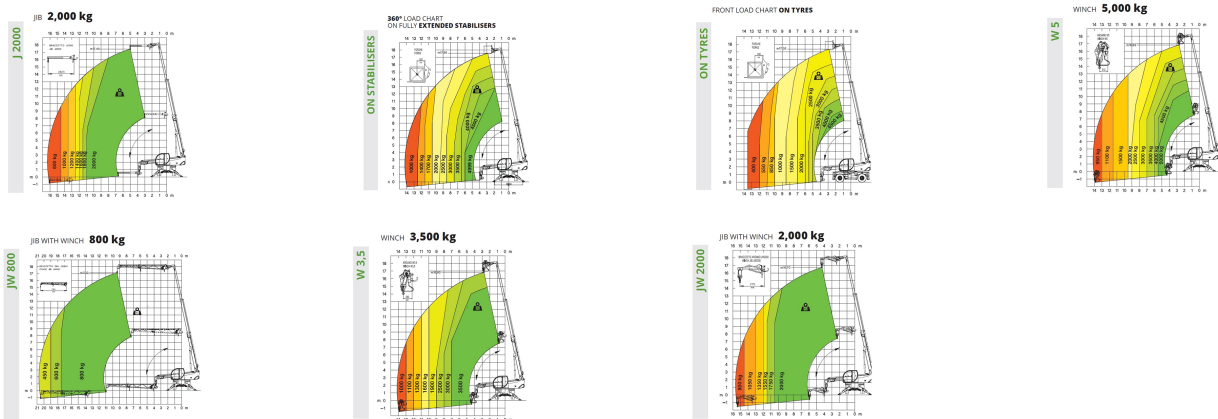




RTH 5.18 rotating telescopic handler

Referencia: RTH 5.18



Description

It has pivoting stabilisers that guarantee a good support surface and a load status control system that detects the risks of overloading the machine.

Includes a Deutz 136 hp TCD 3.6 L4 Phase IV motor. It has continuous 360° rotation. With a 100% pressurised cabin that facilitates the operator's vision, it includes an easy-to-use multifunction screen. It has automatic accessory detection through the RFID system, which creates the corresponding load diagrams. The accessories are interchangeable throughout the range. The RTH 5.18 is a rotating telescopic handler suitable for a multitude of applications in construction and industrial work.

The RTH 5.18 Smart handlers includes

- ° 360° rotation

- 3-in-1 Handler that can adapt as a crane, forklift and basket
- Registered design cabin
- FOPS/ROPS certification
- MCTS system: Touch screen with diagnostics
- 100% air filtration.
- Standard heating and air conditioning
- Cup holder
- RFID accessory recognition system
- Four wheel drive
- Automatic levelling
- Electrical system in CAN Bus
- Optimal lifting performance
- Gradeability 30°/44°

Technical sheet

Engine type	Deutz TCD 3,6 L4 - Stage V
Length	6690 mm
Width	2540 mm
Weight	15100 kg
Load capacity	5000 kg
Height Elevation	18 m
Maximum range	14.26 m
Motor Power (KW)	100 kW (136 hp) at 2,200 rpm
Maximum elevation height	17.56 m
Stabilizers	Pivoting
Load capacity at maximum height	3000 kg
Ground clearance	320 mm
No. of gears	44959
Hydraulic system	350 bar (Load Sensing)
Travel speed	40 km/h
Rotation	360° (continued)
Climate control as standard	Yes
Automatic recognition of accessories	Yes