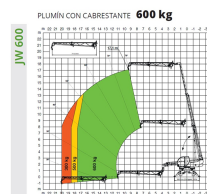
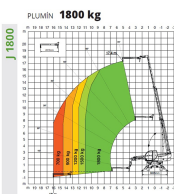
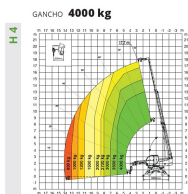
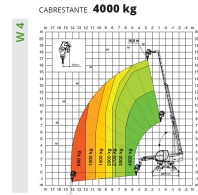
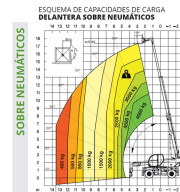
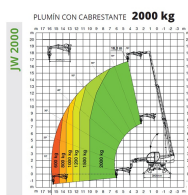




## RTH 4.18 rotating telescopic handler

Referencia: RTH 4.18



## Description

Includes a Deutz 136 hp TCD 3.6 L4 Phase IV motor. It has 400° rotation. With a 100% pressurised cabin that facilitates the operator's vision, it includes an easy-to-use multifunction screen. It has automatic accessory detection through the RFID system, which creates the corresponding load diagrams. The accessories are interchangeable throughout the range.

The RTH 4.18 is a rotating telescopic handler suitable for a multitude of applications in construction and industrial work.

## The RTH 4.18 Smart handlers includes

- 200° rotation

- 3-in-1 Handler that can adapt as a crane, forklift and basket
- Registered design cabin
- FOPS/ROPS certification
- MCTS Touch screen with diagnostics
- 100% air filtration.
- Cup holder
- RFID accessory recognition system
- Four wheel drive
- Automatic levelling
- Electrical system in CAN Bus
- Optimal lifting performance
- Gradeability 30°/40°

## Technical sheet

Model	RTH 4.18
Engine type	Deutz TCD 3,6 L4 - Stage V
Brand	MAGNI
Length	6790 mm
Width	2540 mm
Weight	14400 kg
Load capacity	4000 kg
Height Elevation	18 m
Maximum range	14.25 m
Motor Power (KW)	55 kW (75 hp) at 2,200 rpm
Stabilizers	Pivoting
Load capacity at maximum height	3000 kg
Ground clearance	280 mm
Hydraulic system	270 bar
Travel speed	25 km/h
Climate control as standard	No
Automatic recognition of accessories	Yes
Ordering	4000