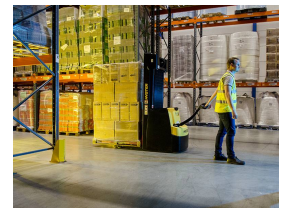
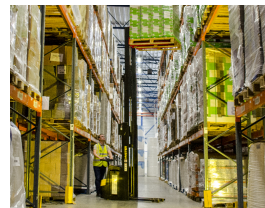
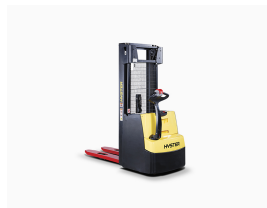
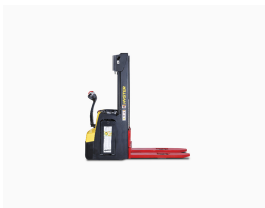




## Hyster S2.0 pedestrian electric warehouse stacker

Referencia: S2.0



### Description

---

This range of S2.0 pedestrian stackers is highly energy efficient and is also designed for horizontal load transfer over short and medium distances, resulting in low operating costs. The Hyster IL version S1.2-1.6 pedestrian stacker is ideal for handling double pallets.

### Hyster S2.0 pedestrian stacker features

- This range of Hyster S2.0 stackers is built to Hyster's stringent quality standards: robustness, smart design, safe operation and efficiency.
- The S2.0 stacker has the lowest power consumption in its class with AC infrastructure in drive and steering motors.

- This pedestrian stacker's powerful acceleration and travel speed of up to 6 km/h, thanks to the 1.2 kW traction motor, offers superior performance and productivity.
- The tiller arm position on this Hyster S2.0 stacker reduces the space required to manoeuvre the forklift.
- This pedestrian stacker range has maximum visibility thanks to the narrower width of the mast channel and the lift cylinder position.
- The chassis design of this Hyster S2.0 stacker is highly robust, in one piece and has no welded arms.
- This Hyster stacker has a screen showing error codes, battery status and hour meter.
- This pedestrian stacker offers low operating costs with a 3000-hour or three-year service interval for replacing the hydraulic oil and the corresponding filter.



# Technical sheet

Model	S2.0
Engine type	Electric
Country	SPAIN
Battery Capacity	24V / 315-375Ah   Li-ion 24V / 300Ah(V/Ah)
Load capacity	2000 kg
Motorisation	Electric
Ordering	2000