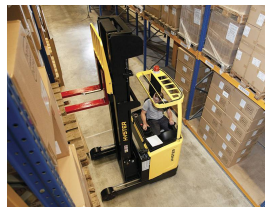
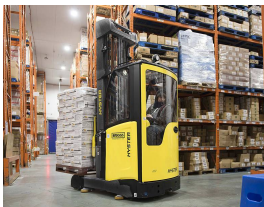
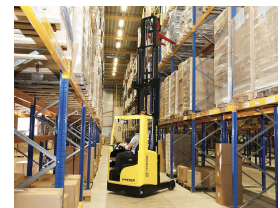
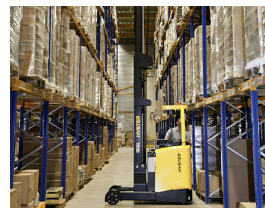
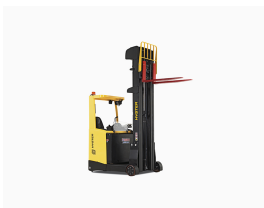




Hyster R1.6 reach forklift

Referencia: R1.6



Description

Working at higher heights with great stability and excellent visibility, manoeuvrability and control, the R1.6 reach forklift is built to Hyster's stringent quality standards: robust, smart, reliable and efficient.

Hyster R1.6 reach forklift features

- There are seven models in this Hyster reach forklift range, from 1.4 to 2.5 tonnes, with a choice of four chassis lengths.
- The R1.6 reach forklift has the option of a cabin for cold storage, which makes it suitable for working comfortably in warehouses at -30°C.

- This Hyster reach forklift is available with five mast lift heights, from 4,650 mm to 12,750 mm.
- It has excellent 'through-the-mast' visibility, reliable stability and residual capacity maintenance at higher altitudes.
- The ergonomically designed compartment of the R1.6 reach forklift has built-in driver-oriented functionalities that streamline operations.
- It features new-generation controllers and motors: exclusive premium touchscreen, joystick and adjustable steering column.
- The cycles of this reach forklift are faster with powerful acceleration and higher travel speed, up to 14 km/h, lifting speed of 0.8 metres per second up to 12.75 m and 180°/360° direction selection to make uninterrupted direction changes in narrow aisles.
- This range of Hyster R1.6 indoor forklifts is easy to maintain and low cost, with long service intervals. ECO-eLo and HiP performance modes reduce power consumption by up to 20%.
- LA R1.6 has advanced features to obtain greater operating performance, including automatic levelling and centring of the forks, a height indicator and laser visual positioning system.



Technical sheet

Model	R1.6
Brand	HYSTER
Length	2523 mm
Width	1265 mm
Height	2195 mm
Battery Capacity	48V / 420-775Ah(V/Ah)
Weight	6971 kg
Load capacity	1600 kg
Height Elevation	10.5 m
Ordering	1600