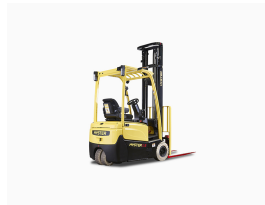




Hyster J1.6XNT electric forklift

Referencia: J1.6XNT



Description

This Hyster J1.6XNT three-wheel electric forklift is designed for low operating costs. The Hyster J1.6XNT forklift is ideal for use in intensive and demanding applications, outside and inside warehouses.

The features of the Hyster J1.6XNT electric counterbalanced forklift are:

- The J1.6XNT three-wheel forklift has a robust chassis, bonnet and side cover construction for protection against impacts. This helps make this Hyster J1.6XNT forklift one of the strongest and most balanced electric forklifts in the industry.

- This range of Hyster electric forklifts features powerful AC motor technology used for pulling and lifting, so that the J1.6XNT can work reliably on much longer uninterrupted shifts.
- The J1.6XNT electric forklift has the comparatively lowest power consumption in its class, helping to reduce costs in the most demanding applications.
- This Hyster J1.6XNT forklift has an intelligent axle design that is also combined with its compact chassis dimensions so that it can work in aisles with the tightest widths and offer faster manoeuvring in warehouse work aisles.
- The reliability and low operating costs of this Hyster J1.6XNT electric forklift are achieved through the use of highly durable and virtually maintenance-free components, such as oil-bath disc brakes, brushless AC motors, thermal protection built into the traction motors and advanced cooling system.
- The easy access to components such as the motor, the pump and the oil tank in this forklift range ensure less downtime and lower maintenance and repair costs.

Technical sheet

Model	J1.6XNT
Engine type	Electric
Lift Height (Industry)	3360/5500 mm
Machine type	Electric forklift trucks
Country	SPAIN
Length	2807 / 3011 mm
Width	1050 mm
Height	2070 mm
Wheels condition (approx.)	Pneumatic/Superelastic/Superelastic Anti-marking
Mast type	Duplex Vista Plus / Triplex Vista Plus
Turning radius	1476-1676
Lateral displacement	Yes/No
Closed height	2180/3180 mm
Battery Capacity	48V / 750Ah(V/Ah)
Hydraulic Controls	Levers / Joystick / Minilevers
Weight	3083 /3285 kg
Load capacity	1600 kg
Motorisation	Electric
Ordering	1600