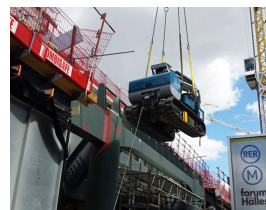


# 2500 kg MOBILEV 25MT-C360 Mini Crane

Referencia: 25MT C360



## Description

---

A major innovation of this mini crane model is a variable channel from 1.41 m to 2.56 m without stabiliser, so that it can move with the suspended load to the side. It has a 31.2 KW diesel engine and rubber tracks, with which it can climb 40% slopes and travel at 4.7 km/h.

It has a double hydraulic telescopic shaft with a long reach and an optional hydraulic jib with a 1300/2100 mm length. It uses a three-cylinder kinematics, developed by Mobilev Cranes, which enables a greater angular displacement of the shaft.

Lastly, the 25MT C360 can also be fitted with the "hydraulic winch" option. Perfectly fitted in the mini crane, the cable passes through the inside of the shaft for optimal safety, an innovation from Mobilev Cranes.

## 25MT C360 MT-3X1-TC mini crane accessories and equipment:

- Interchangeable rubber tracks
- Two-speed traction gearmotors (open circuit)
- Hydraulic variable track (1.41 m -> 2.56 m)

- Hydraulic lifting brackets
- 360° turret (not continuous)
- Dual-axis inclinometer fall arrest device
- Automatic hydraulic braking
- Automatic hydraulic parking brake
- Hydraulic oil cooling radiator
- Hydraulic lever emergency controls
- 7 "IP67 colour control display
- IP67 CanOpen Controller with "Black Box"
- Three-colour visual marking
- Remote electric start and 24V alternator
- 2x12V starter batteries 24V projector

## Technical sheet

---

Model	25MT-C360
Brand	MOBILEV
Load capacity	2500 kg
Ordering	2500