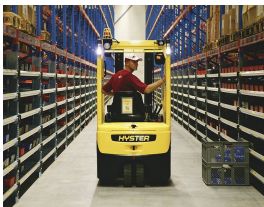
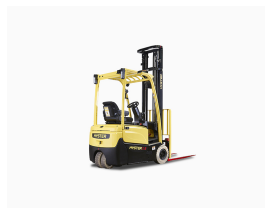
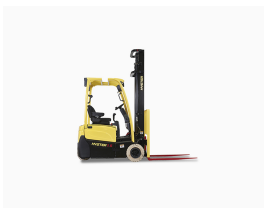




Hyster J1.5XNT electric forklift

Referencia: J1.5XNT



Description

This Hyster J1.5XNT three-wheel electric forklift is designed for low operating costs. The Hyster J1.5XNT forklift is ideal for use in intensive and demanding applications, outside and inside warehouses.

The features of the Hyster J1.5XNT electric counterbalanced forklift are:

- The J1.5XNT three-wheel forklift has a robust chassis, bonnet and side cover construction for protection against impacts. This helps make this Hyster J1.5XNT forklift one of the strongest and most balanced electric forklifts in the industry.

- This range of Hyster electric forklifts features powerful AC motor technology used for pulling and lifting, so that the J1.5XNT can work reliably on much longer uninterrupted shifts.
- The J1.5XNT electric forklift has the comparatively lowest power consumption in its class, helping to reduce costs in the most demanding applications.
- This Hyster J1.5XNT forklift has an intelligent axle design that is also combined with its compact chassis dimensions so that it can work in aisles with the tightest widths and offer faster manoeuvring in warehouse work aisles.
- The reliability and low operating costs of this Hyster J1.5XNT electric forklift are achieved through the use of highly durable and virtually maintenance-free components, such as oil-bath disc brakes, brushless AC motors, thermal protection built into the traction motors and advanced cooling system.
- The easy access to components such as the motor, the pump and the oil tank in this forklift range ensure less downtime and lower maintenance and repair costs.

Technical sheet

| | |
|------------------------------|--|
| Model | J1.5XNT |
| Engine type | Electric |
| Lift Height (Industry) | 3360/5500 mm |
| Machine type | Electric forklift trucks |
| Country | SPAIN |
| Length | 2807 mm |
| Width | 1050 mm |
| Wheels condition (approx.) | Pneumatic/Superelastic/Superelastic Anti-marking |
| Mast type | Duplex Vista Plus / Triplex Vista Plus |
| Turning radius | 1476 |
| Lateral displacement | Yes/No |
| Closed height | 2180/3180 mm |
| Battery Capacity | 48V / 500Ah(V/Ah) |
| Hydraulic Controls | Levers / Joystick / Minilevers |
| Weight | 2971 kg |
| Load capacity | 1500 kg |
| Motorisation | Electric |
| Ordering | 1500 |