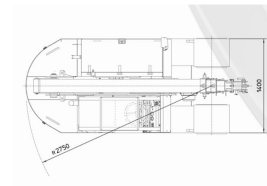
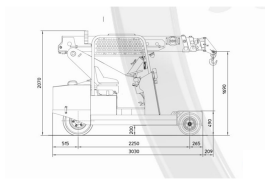
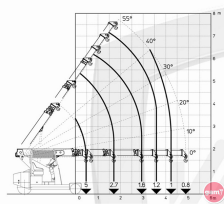


V-50E

Valla 50 E Electric Crane



Technical sheet

Model	50 E
Length	3239 mm
Height	2070 mm
Potencia Motor (KW)	5kw
Engine type	Electric
Brand	VALLA
Battery Capacity	48/575V/Ah
Side Reach	4.88 m

Description

This type of mini crane works with an electric motor and long-lasting batteries. As they have no emissions, they are the best solution for indoor work or environments in which specific hygiene conditions need to be met.

Model 50E is typically used in:

- Aircraft and aviation manufacturers and maintenance
- Concrete and precast products
- Marble, granite and stone industries
- Military and government facilities
- Rubber, plastic and tyre industries
- Working with steel