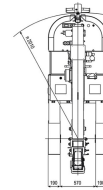
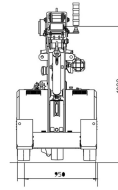
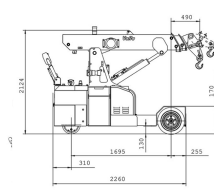
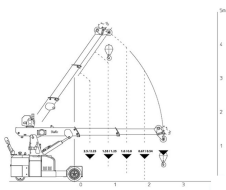


## V-25E

### Valla 25E Electric Crane



#### Technical sheet

Model	25 E
Length	2730 mm
Potencia Motor (KW)	3kw
Engine type	Electric
Brand	VALLA
Battery Capacity	48/200V/Ah
Side Reach	2.8 m

#### Description

The electric motor and design of this machinery range makes them extremely versatile tools suitable for the most demanding work situations.

The emission-free electric motor is a great option for:

- Aircraft and aviation manufacturers and maintenance
- Concrete and precast products
- Marble, granite and stone industries
- Military and government facilities
- Rubber, plastic and tyre industries
- Working with steel