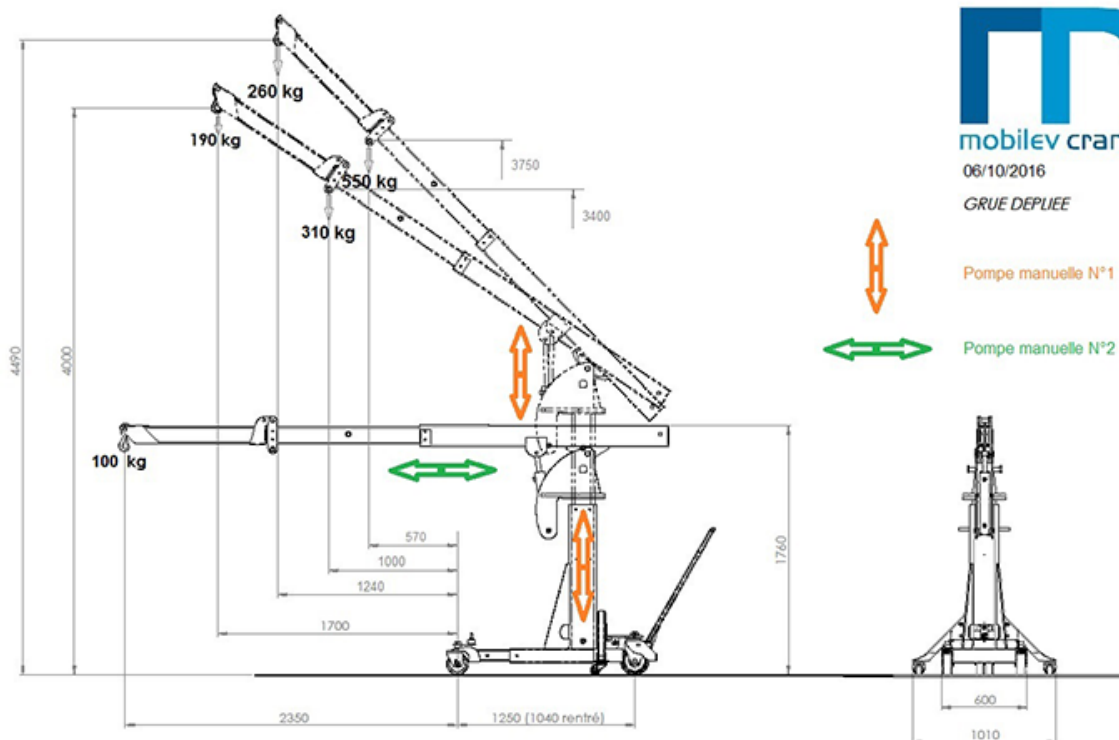
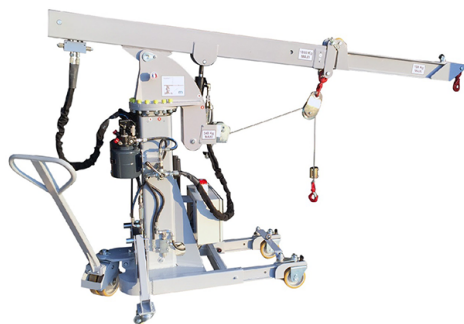


# Mobilev 12MO- Essentielle Mini Crane

Referencia: 12MO Essentielle



## Description

---

Like all the mini cranes developed by Mobilev, it includes an anti-fall mechanism that offers maximum safety and stability even in the event of human error. This mechanism also includes an anti-tilt alarm to operate with guarantees.

This mini crane is just 600 mm wide with the outriggers folded down and can lift the load to a height of 4.5 metres. Thanks to its pivoting wheels, the 12MO-Essentielle can also rotate on its own axis.

If you are looking for a similar crane with other specifications or accessories, the model can be adapted to your requirements.

### **12MO-Essentielle mini crane accessories and equipment:**

- Two DE hydraulic hand pumps with steel tank
- Six-way deraillieur (mast or tilt cylinder selection)
- Hydraulic telescopic shaft (double acting cylinder)
- 600 mm Hydraulic vertical mast (double acting cylinder)
- Shaft tilt hydraulic cylinder (double acting cylinder)
- Two folding stabilisers with swivel wheels
- Anti-tip device
- Parking brake with automatic application

## Technical sheet

---

Model	12MO-ESSENTIELLE
Brand	MOBILEV
Load capacity	1000 kg
Ordering	1000