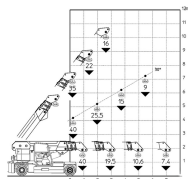
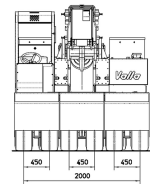
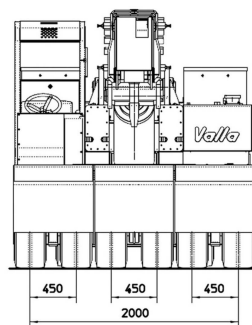
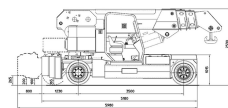
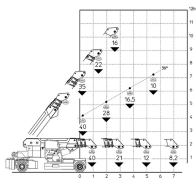


# Valla 400E Electric Crane

Referencia: V400E



## Description

Like all mini cranes, Valla has 3B6 digital load monitoring systems, for safe and efficient lifting. This type of mini crane works with an electric motor and long-lasting batteries. As they have no emissions, they are the best solution for indoor work or environments in which specific hygiene conditions need to be met.

## Model 400E is typically used in:

- Demolitions

- Construction sector
- Concrete and precast products
- Working with steel
- Machinery movements
- Trade show and exhibition facilities

## Technical sheet

Model	400 E
Engine type	Electric
Brand	VALLA
Length	5980 mm
Width	2350 mm
Height	2530 mm
Battery Capacity	96/1450V/Ah
Weight	28000 kg
Load capacity	40000 kg
Motor Power (KW)	36kw
Working Height	7,1 m
Side Reach	6.97 m
Motorisation	Electric
Ordering	40000