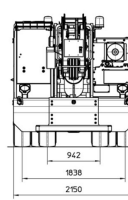
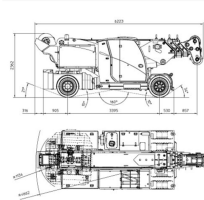
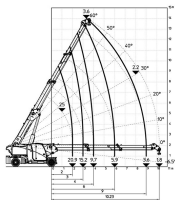


Valla 250E Electric Crane

Referencia: V250E



Description

Like all mini cranes, Valla has 3B6 digital load monitoring systems, for safe and efficient lifting. This type of mini crane works with an electric motor and long-lasting batteries. As they have no emissions, they are the best solution for indoor work or environments in which specific hygiene conditions need to be met.

Model 250E is typically used in:

- Demolitions
- Construction sector
- Concrete and precast products
- Working with steel
- Machinery movements
- Trade show and exhibition facilities

Technical sheet

Model	250 E
Engine type	Electric
Brand	VALLA
Length	5831 mm
Height	2319 mm
Battery Capacity	96/1450V/Ah
Load capacity	25000 kg
Motor Power (KW)	30kw
Working Height	12,3 m
Side Reach	9.79 m
Motorisation	Electric