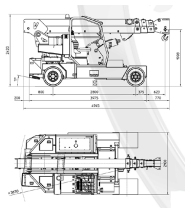
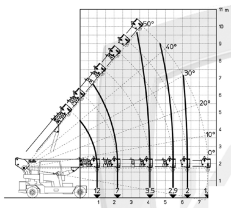


Valla 120E Electric Crane

Referencia: V-120E



Description

Like all mini cranes, Valla has 3B6 digital load monitoring systems, for safe and efficient lifting. This type of mini crane works with an electric motor and long-lasting batteries. As they have no emissions, they are the best solution for indoor work or environments in which specific hygiene conditions need to be met.

The 120E model is usually used in:

- Demolitions
- Construction sector
- Concrete and precast products
- Working with steel
- Machinery movements
- Trade show and exhibition facilities

Technical sheet

Model	120 E
Engine type	Electric
Brand	VALLA
Length	4945 mm
Height	2420 mm
Battery Capacity	72/820V/Ah
Weight	14000 kg
Load capacity	1800 kg
Motor Power (KW)	12kw
Working Height	7,6 m
Side Reach	7.5 m
Motorisation	Electric
Ordering	1800