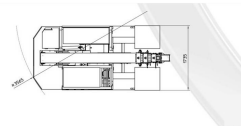
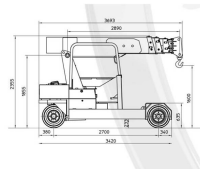
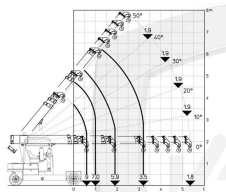


# Valla 90 E Electric Crane

Referencia: V-90E



## Description

---

*Like all mini cranes, Valla has 3B6 digital load monitoring systems, for safe and efficient lifting. This type of mini crane works with an electric motor and long-lasting batteries. As they have no emissions, they are the best solution for indoor work or environments in which specific hygiene conditions need to be met.*

***The 90E model is usually used in:***

- Demolitions
- Construction sector
- Concrete and precast products
- Working with steel
- Machinery movements
- Trade show and exhibition facilities

## Technical sheet

Model	90 E
Engine type	Electric
Brand	VALLA
Length	3693 mm
Width	1735 mm
Height	2355 mm
Battery Capacity	48/700V/Ah
Load capacity	9000 kg
Motor Power (KW)	10kw
Working Height	5,35 m
Side Reach	5.35 m
Motorisation	Electric
Ordering	9000