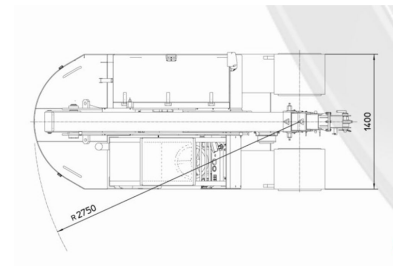
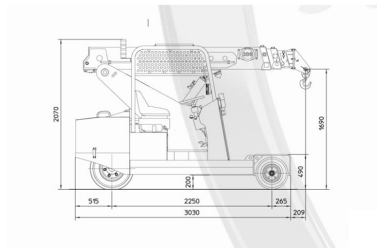
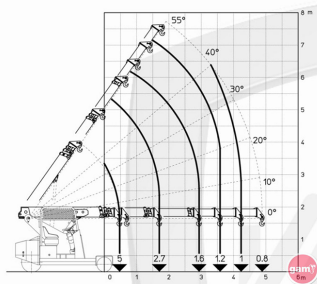


# Valla 50 E Electric Crane

Referencia: V-50E



## Description

This type of mini crane works with an electric motor and long-lasting batteries. As they have no emissions, they are the best solution for indoor work or environments in which specific hygiene conditions need to be met.

## Model 50E is typically used in:

- Aircraft and aviation manufacturers and maintenance
- Concrete and precast products
- Marble, granite and stone industries
- Military and government facilities
- Rubber, plastic and tyre industries
- Working with steel

## Technical sheet

Model	50 E
Engine type	Electric
Brand	VALLA
Length	3239 mm
Height	2070 mm
Battery Capacity	48/575V/Ah
Load capacity	5000 kg
Motor Power (KW)	5kw
Working Height	4,88 m
Side Reach	4.88 m
Motorisation	Electric
Ordering	5000