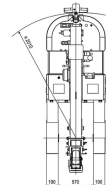
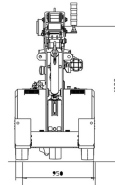
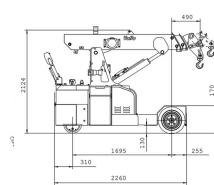
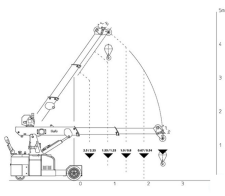


Valla 25E Electric Crane

Referencia: 25E



Description

The electric motor and design of this machinery range makes them extremely versatile tools suitable for the most demanding work situations.

The emission-free electric motor is a great option for:

- Aircraft and aviation manufacturers and maintenance
- Concrete and precast products
- Marble, granite and stone industries
- Military and government facilities
- Rubber, plastic and tyre industries
- Working with steel

Technical sheet

Model	25 E
Engine type	Electric
Brand	VALLA
Length	2730 mm
Battery Capacity	48/200V/Ah
Load capacity	2500 kg
Motor Power (KW)	3kw
Working Height	2.7 m
Side Reach	2.8 m
Motorisation	Electric
Ordering	2500