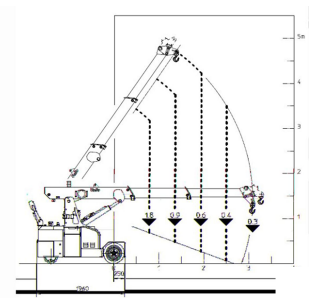
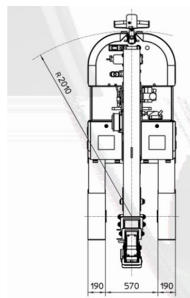
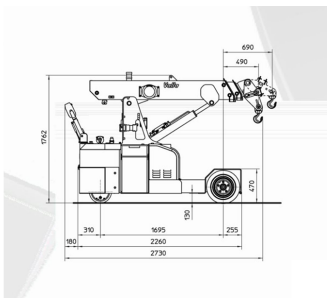


Valla 18E Electric Crane

Referencia: 18E



Description

The Pick & Carry line refers to mini cranes with the ability to move after picking up a load. The configuration and design of these machines makes them extremely versatile tools suitable for the most demanding work situations.

The emission-free electric motor is a great option for:

- Aircraft and aviation manufacturers and maintenance
- Concrete and precast products
- Marble, granite and stone industries
- Military and government facilities
- Rubber, plastic and tyre industries
- Working with steel

Technical sheet

Model	18 E
Engine type	Electric
Brand	VALLA
Length	2730 mm
Battery Capacity	48/200V/Ah
Load capacity	1800 kg
Motor Power (KW)	3kw
Working Height	1.8 m
Side Reach	2.8 m
Motorisation	Electric
Ordering	1800